



# KENT SCHOOL DISTRICT

EQUITY | EXCELLENCE | COMMUNITY

## HOW TO LOG IN FOR THE FIRST TIME ON A HOME NETWORK

Power on the laptop and wait for it to get to the log in screen.

Click on the wireless icon on the bottom right of the screen and connect to your home WiFi. (See Fig 1)

After it says connected, please restart your computer and wait five minutes before you move onto the next step. (See Fig 2)

Press any key to open up the login screen

Type sn##### but replace the # with your student ID number for the username (See Fig 3)

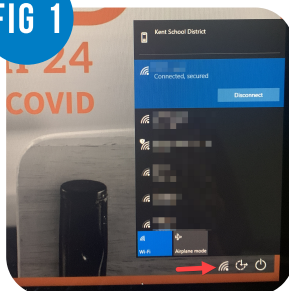
The first time password will be:  
[Four letters of your last name (if you have less than 4 letters, use your full last name)][space][first initial of first name]@[Two letter School code in Capital Letters].  
Press the Enter key.

Example password for Tim Smith:  
smit t@KM  
Example password for Tim Li:  
li t@KM  
(See Fig 3)

Press OK to change your password  
Type in a new password and confirm it below  
(See Fig 4)

Press enter and you will have successfully logged into your computer

FIG 1



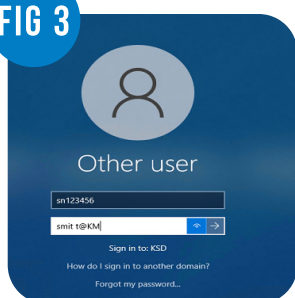
WIRELESS ICON AND AVAILABLE NETWORKS

FIG 2



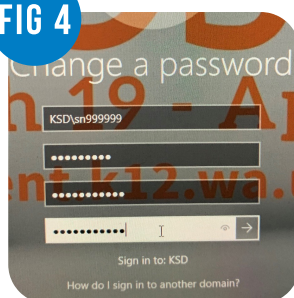
POWER ICON AND POWER OPTIONS

FIG 3



STUDENT USERNAME AND FIRST-TIME PASSWORD

FIG 4



STUDENT CHANGE A PASSWORD SCREEN

PLEASE EMAIL [CSC@KENT.K12.WA.US](mailto:CSC@KENT.K12.WA.US) OR CALL  
253-373-7030 IF YOU RUN INTO ANY ISSUES